

SCREEN PRINT ARTWORK SPECIFICATIONS

Please also visit pages 186-188 for additional information.



Available on select *COTTON/JUTE, PET NON-WOVEN, NON-WOVEN, R-PET NON-WOVEN, and POLYESTER* bags.

PRINTING METHOD Affordable, fast production process that presses high-quality ink through a fine mesh screen directly onto bags, resulting in artwork with impressive clarity.

PROGRAMS and FORMATS WE ACCEPT

Any other file formats are not acceptable and may delay production.

ADOBE ILLUSTRATOR—Our Preferred Vector Art Program.

Save as native Illustrator .ai file, or Illustrator Default PDF with the *Preserve Illustrator Editing Capabilities* box check-marked.

VECTOR ART IS PREFERRED

Vector images can be resized without any loss of quality. Please note that placing or importing photographs, bitmap, or raster images into a drawing program does not convert them into vector artwork. If your artwork contains a placed or embedded raster image (PSD, TIFF, JPEG, CPT, EPS), the original raster image file should be included and be pre-approved by **BAG MAKERS**.

MULTICOLOR IMPRINTS

We need to pre-approve your artwork as color registration requirements exist and vary per bag style. Some movement between colors will occur due to the printing method required for post-converted bags.

2-color solid screen imprint detail shown at 100%



FONTS and LINE RULES

MINIMUM SIZES:

2-point lines or rules.

16-point fonts. Thin serif font styles are not recommended.

MINIMUM SIZES: For printing on mesh panels of bags on pages 46-47.

3-point lines or rules.

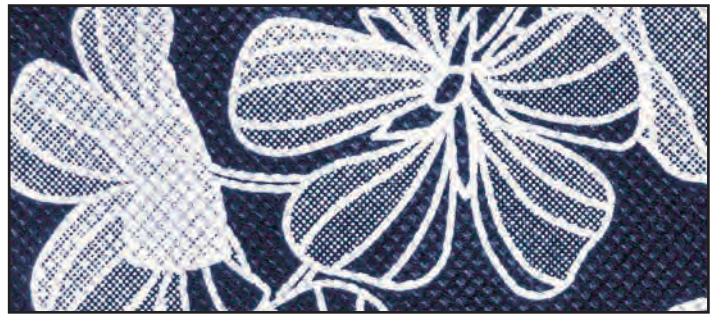
28-point fonts. Bold fonts provide the best results. Thin serif font styles are not recommended.

FONTS—Please Convert To Outlines (Paths or Curves) If we do not have the exact font you used, the text in your art will "default" to a less attractive font, changing the look of your design. Converting your fonts to outlines, paths, or curves eliminates this hazard by changing your fonts into vector shapes. This ensures that your artwork will print exactly how you expect it to look.

HALFTONES

For best results, artwork containing halftones must be pre-approved and is available on select bag styles. Halftones are printed with a 30-line screen. Color percentages for art containing halftones should range from 20% to 60%. Areas less than 20% may not print and areas greater than 60% may fill in and become a solid color. Designs that contain gradients or blends may need alterations for optimum print quality and will require a final, signed proof approval.

Halftone screen imprint detail shown at 100%



SCREEN PRINT Color Selection—For imprinting on COTTON/JUTE, PET NON-WOVEN, NON-WOVEN, and POLYESTER bags.

NOTE: The color samples below represent ink printing on white bags. Color tints/shades/tones may fluctuate up to 5% within a print run or reorder. Colors printed on a colored bag will result in a different tint, shade, or tone. Some screen ink colors are not recommended on some colored bags. Please contact us for options or further details. Swatches shown are for approximate color representation only. **PANTONE (PMS) color match is not available.** For additional colors, call for availability, production time, and cost.

SS-1 Yellow	SS-2 Banana Yellow	SS-3 Orange	SS-4 Neon Pink	SS-5 Scarlet Red	SS-6 Maroon	SS-7 Purple	SS-8 Violet	SS-9 Process Blue	SS-10 Light Blue	SS-11 Dark Blue	SS-12 Navy Blue
SS-13 Neon Green	SS-14 Blue Teal	SS-15 Forest Green	SS-16 Dark Green	SS-17 Khaki Tan	SS-18 Champagne Gold	SS-19 Brown	SS-20 White	SS-21 Cool Gray	SS-22 Black	SS-23 Gold Metallic	SS-24 Silver Metallic
SS-25 Pink	SS-26 Dark Red	SS-27 Green Teal	SS-28 Pale Green	SS-29 Kelly Green	SS-30 Orange/Red	SS-31 Bright Blue	SS-33 Dark Turquoise	SS-34 Grape	SS-35 Lime Green	SS-36 Dark Lime Green	SS-40 Deep Red
				<p>GLOW-IN-THE-DARK Screen Print Colors These colors, when printed on a colored bag, will result in a different tint, shade, or tone. Orange is not recommended on dark-colored bags.</p>							
SS-41 Yellow Orange	SS-42 Reflex Blue	SS-43 Blue	SS-45 Olive Green								
SS-32 Glow-in-the-Dark Green	SS-37 Glow-in-the-Dark Pink	SS-38 Glow-in-the-Dark Orange	SS-39 Glow-in-the-Dark Antique White	SS-44 Glow-in-the-Dark Classic							

VERSION: Proof 11 DATE: 10/14/2022